



Trolley Anchor User Manual

WARNING: These instructions must be provided to the user of this product. It is the responsibility of the user to read and understand these instructions or have them explained before using this equipment. Failure to do so could result in serious injury or death.

Certified fall protection and product training is highly recommended before using this equipment and may be required by local Occupational Health and Safety Regulations.



905 Regional Road 55, P.O. Box 100
Lively, Ontario, P3Y 1E7
Tel: (705) 692-5672 Fax: (705) 692-5673
Toll Free: 1-866-862-7770

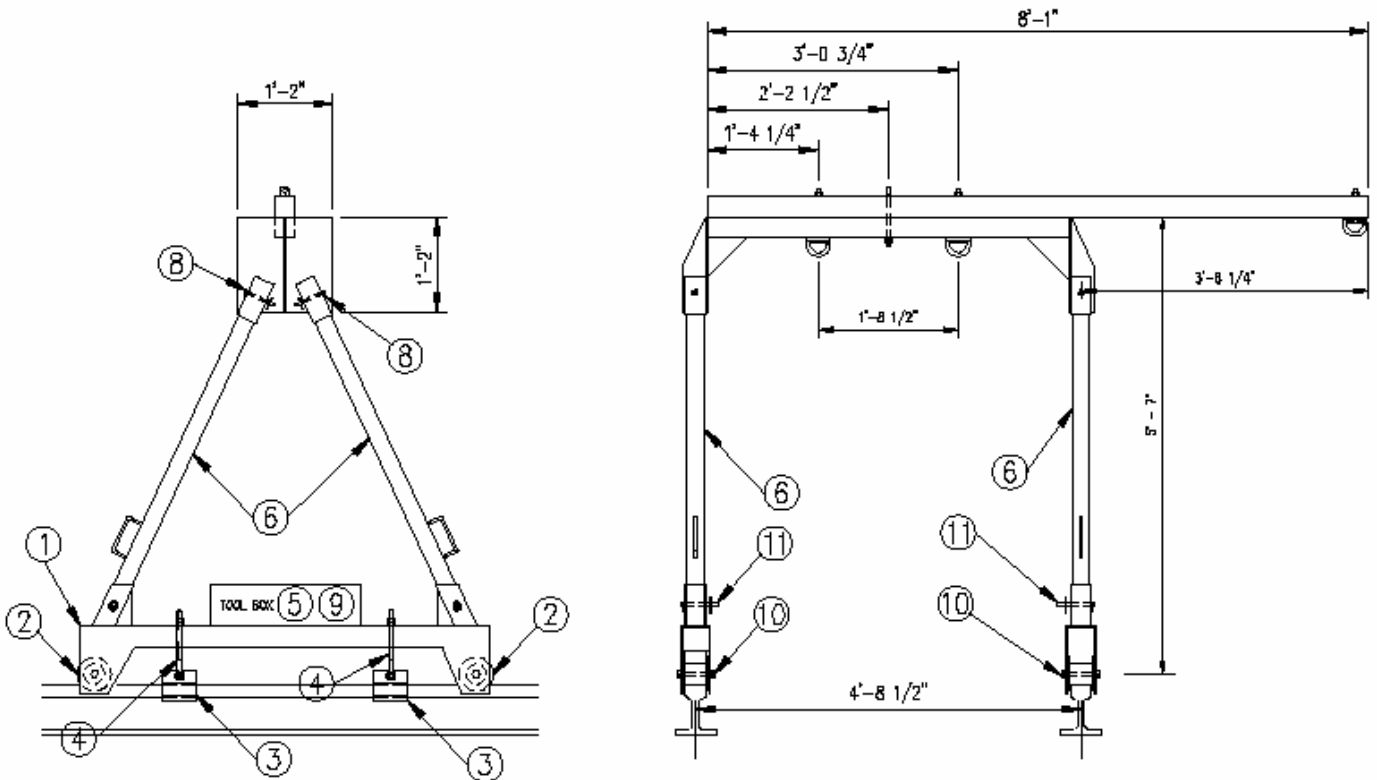
TABLE OF CONTENTS

1	Trolley Anchor Assembly	3
2	Application and Usage.....	4
3	Inspection	6
4	Maintenance	6
5	Manufacturers.....	7

1 Trolley Anchor Assembly

Ensure all components of the trolley anchor are present prior to assembly. Refer to Table and sketch below.

ITEM NO.	QUANTITY	DESCRIPTION
1	2	Base Frame
2	4	Flanged Wheels
3	4	Rail Dogs
4	4	Turnbuckle Jaw
5	2	Tool box
6	4	Posts
7	1	Head Plate Cross member assembly
7a	2 or 3	D-ring Anchorage (qty 3 with rescue arm option)
8	4	3/8" hitch pin with clip
9	4	3/8" bolts (for tool box)
10	4	5/8" axles
11	4	5/8" hitch pin with clip
12	1	Optional Rescue Arm



WARNING: *Always assemble and disassemble the trolley anchor at least 10ft away from any fall hazard.*

NOTE: Prior to reaching step 1.4 below, the trolley anchor may be assembled away from the rails and then lifted into place using the supplied lifting eye and appropriate lifting equipment or 2 men can simply carry into place using the handles.

- 1.1 If present, attach Rescue Arm option (12) to Head Plate cross member assembly (7) using supplied D-ring nuts and bolts.
- 1.2 Install Head Plate cross member assembly (7) onto top of posts (6) and secure with 3/8" hitch pin with clip (8).
- 1.3 Install posts (6) onto base frame (1) and secure with 5/8" hitch pin with clip (11).
- 1.4 Install tool box (5) onto base frame (1) using 3/8" bolts (9).
- 1.5 Attach rail dogs (3) to rail and to turnbuckle jaw (4) using the bolt supplied with the turnbuckle jaw.
- 1.6 Adjust height of rail dogs by tightening or loosening the double nuts on the turnbuckle jaw nut so that the rail dogs slide easily on the rails. Once at desired height, tighten the double nuts against each other to secure in place.

2 Application and Usage

2.1 General Application

The ISM trolley anchor is mobile fall arrest anchorage for railroad bridge tie replacement work. The height of the anchorage is designed to limit the potential free fall distance of a fallen worker.

2.2 Capacity

The Trolley anchor is rated for 2 workers, 1 worker per D-ring anchorage. The maximum weight of each worker is not to exceed 310 lbs including all tools and equipment.

2.3 Personal Fall Arrest Equipment

Each worker must wear an ANSI Z359.1 compliant full body harness and connect to one of the trolley anchor D-rings using a self retracting lifeline or shock absorbing lanyard with a rated maximum arrest force of 900 lbs or less. Maximum shock absorbing lanyard length must not exceed 6ft.

2.4 Usage Limitations

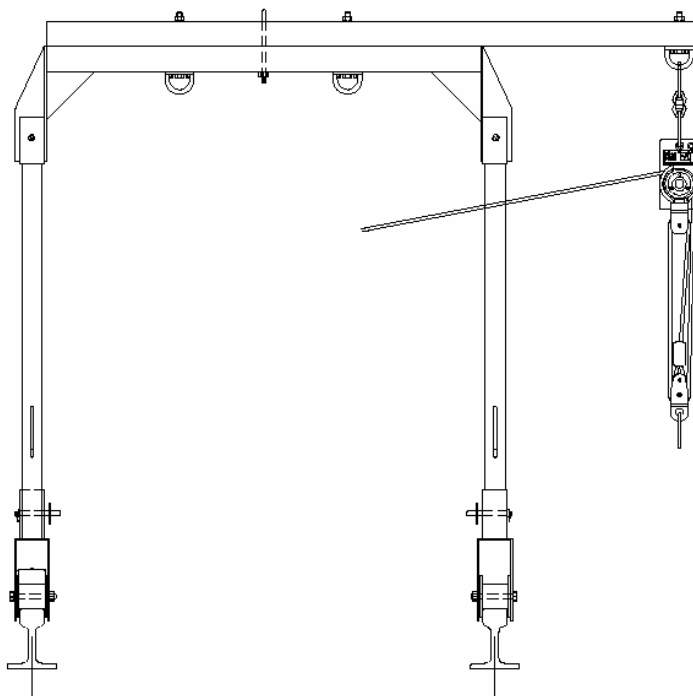
2.4.1 It is the responsibility of the user and purchaser of this equipment to ensure that a rescue plan is in place to immediately detect and safely retrieve a fallen worker. Please contact ISM if you require assistance in formulating a rescue plan.

2.4.2 After a fall, the trolley anchor must be immediately removed from service and ISM or an authorized and trained representative must be contacted to for detailed inspection and recertification.

2.5 Rescue Arm Option

The Trolley Anchor Rescue Arm option provides an anchor point, approximately 3'-6" away from the rail. This anchor point must only be used for rescue or retrieval of a fallen worker using a rope rescue retrieval system (ISM EZQ System), a man rated winch, or a self retracting lifeline with an integral rescue retrieval winch.

The rated capacity of this anchor point is 310 lbs including all tools and equipment.



3 Inspection

3.1 Before and after each use

The user(s) of the trolley anchor must visually inspect the trolley anchor for any signs of damage, deterioration or distress before and after each use. In addition, inspect rail dogs in accordance with Protecta's instructions. If in doubt about the safety or condition of the trolley anchor, have it inspected by a trained competent/qualified person and/or contact ISM for assistance. Ensure all fasteners (nuts, bolts and pins) are tight and safety pins are installed. Remove the trolley anchor from service if any of the following conditions are observed.

3.1.1 D-ring Connectors are damaged, bent, deformed or corroded.

3.1.2 Any rail dog is damaged, bent, deformed or corroded or connection hole is deformed or elongated. Refer also to Protecta instructions.

3.1.3 Any turnbuckle jaws is damaged, bent, deformed or corroded.

3.1.4 Any portion of the frame structure (posts, base frame, cross member) is damaged, bent, deformed or corroded.

3.1.5 Any missing safety clip or nut. Turnbuckle jaws must have two nuts.

3.2 Annual Inspection

The trolley anchor should be inspected as per 3.1 annually or more frequently depending on conditions by a trained and competent person other than the user. A written record of the inspection and approval for continued use should be recorded in company records.

4 Maintenance

4.1 Cleaning

The trolley anchor may be cleaned with water and a mild soap solution. Do not use bleach or any other harsh chemicals for cleaning.

4.2 Repairs

If any repairs are required, immediately remove the trolley anchor from service and contact ISM for further instructions. Only ISM or an authorized agent may make repairs to the trolley anchor.



905 Regional Road 55, P.O. Box 100
Lively, Ontario, P3Y 1E7
Tel: (705) 692-5672 Fax: (705) 692-5673
Toll Free: 1-866-862-7770

5 Manufacturers

Industrial Solutions Management Inc
905 Regional Road 55, PO BOX 100
Lively, ON
P3Y 1E7
Phone: 705-692-5672
Fax: 705-692-5672
Toll Free: 1-866-862-7770

Industrial Solutions Management USA Inc.
3027 Glendale Ave.
Green Bay, WI
54313
Phone: 920-662-0999
Fax: 920-662-0996
Toll Free: 1-866-862-7770